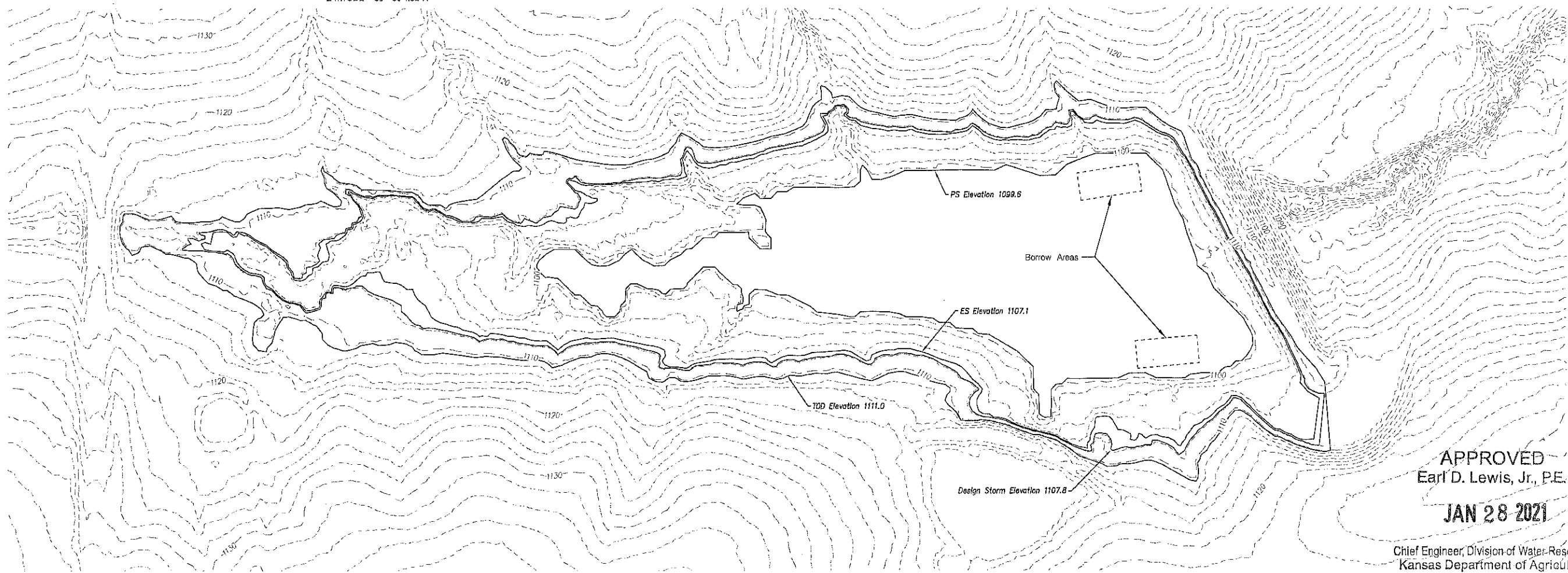


TOP OF DAM ELEV. - 1111.0
 AUXILIARY SPWY. ELEV. - 1107.1
 PRINCIPAL SPWY. ELEV. - 1099.6

Location: NE 1/4 of Section
 25-T8S-R14E in
 Jackson County, KS

THE POINT CENTERLINE DAM AND STREAM CHANNEL
 INTERSECT IS LOCATED AT LONGITUDE 95°47'47.72"W AND
 LATITUDE 39°30'4.32"N



APPROVED
 Earl D. Lewis, Jr., P.E.

JAN 28 2021

Chief Engineer, Division of Water Resources
 Kansas Department of Agriculture

HYDROLOGY INFORMATION

Average Watershed Slope = 1.6%; Drainage Area = 313 acres
 Weighted Soil Cover Complex No. AMCII = 80; AMCI = 91
 Drainage Length = 6,700 ft.; Drop = 110 ft.;
 Inflow Hydrographs = NRCS 6hr. duration, type II rainstorm

STRUCTURE CLASSIFICATION:

Effective Ht. = 32.7 ft., Storage = 109 ac.ft.; Str. Size 3, Class A
 Aux. Spwy. 100 YR, 6 hr. P = 5.7 in.; Min. Width = 40', FB = 3'

DETENTION:

Principal Spillway at Elev. 1099.6 ft.; AMC II = 80
 12" Diam. PVC Principal Spillway; Canopy Inlet w/Beaver Retardent
 4% 6 hr. P = 4.5 in.; Max. Routed El. 1106.18
 Max. Storage = 98 ac. ft.

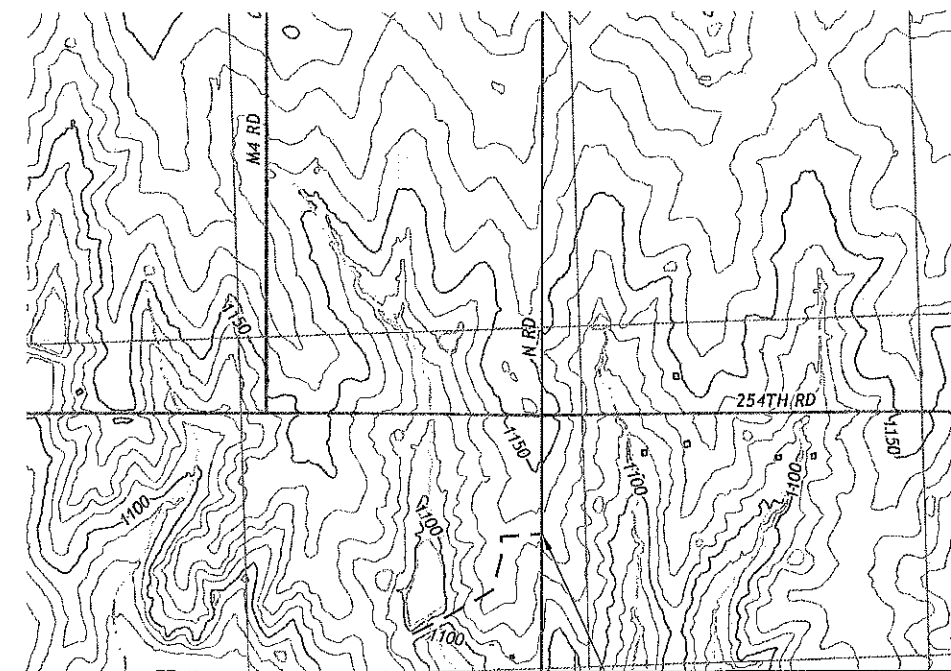
DESIGN STORM

Zone 1; AMC III = 91 Aux. Spwy. 1% 6 hr. P = 5.7 in.
 Aux. Spwy. Level Crest = 113 ft.
 Aux. Spwy. Crest Elev. 1107.1
 Floodrouting NRCS 6 hr. Type II Storm
 12" Diam. Max. Routed Elev.: 1107.83
 Maximum Routed Discharge = 200.22 cfs

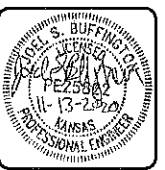
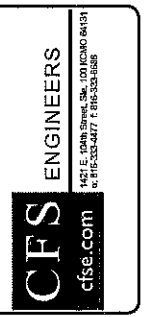
Lowest Top of Dam Elevation: 1111.0
 TOD Set at = 1111.0

Hydrology Summary for Dam Design

Soil Group Letter	Land Use Name	Condition Practice Name	Complex No.		Area Acres	Complex Number Times Area	
			AMC II	AMC III		AMC II	AMC III
D	Roads	Compacted	90	96	7	630	672
D	Cropland	Terraced	85	95	65	5525	6175
B	Grassland	Fair	89	84	84	5798	7056
D	Grassland	Fair	84	93	157	13188	14801
Totals					313	25139	28504



Ingress/Egress Route
 off N Road



Mark	Description	Date

Designed by:	00-00-00	Reviewed by:	
Dwn by:		Plt scale:	1/2
Submitted by:		File name:	7/07-ST-SH-ContourMap.dwg
		Plot date:	01/28/2021

CFS ENGINEERS, P.A.
 422 E. 104TH STREET
 KANSAS CITY, MO 64131
 DELAWARE WATERSHED JOINT DISTRICT
 NO. 10, GRADE STABILIZATION
 DETENTION DAM SITE C-58
 JACKSON COUNTY, KS

CONTOUR MAP

Sheet reference number:
 5

